

7<sup>TH</sup> INTERNATIONAL CONVENTION  
OF ENVIRONMENTAL LAUREATES  
FREIBURG, GERMANY - 15 - 18 MARCH 2018



# Laureates' Symposium



Supporters and Donators



Associate Partners





◆ Ilse Köhler-Roleffson

India

“Minimizing foodprint through the support for pastoralism – Using the Kumbhalgarh Camel Dairy as example”

# Minimizing footprint through the support for pastoralism:

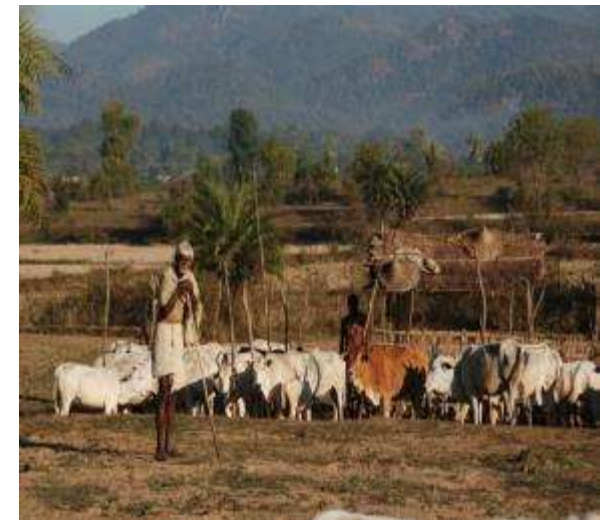
## The example of the Kumbhalgarh Camel Dairy



Dr. Ilse Köhler-Rollefson



# India's pastoralists



# The *foodprint* of pastoralism

Principles of pastoralism are different than those underlying conventional food production:

- No replacement of native vegetation (biodiversity)
- Makes use of available vegetation or crop byproducts
- Requires no fossil ,pesticides, chemical fertilizer (in fact contributes organic fertilizer),
- Enables food production in marginal areas (deserts, high mountains) and unlikely ecological niches, incl. marine areas),
- Higher nutritional quality of products
- Ability to adapt to climate change

# Mobile livestock versus combined harvester

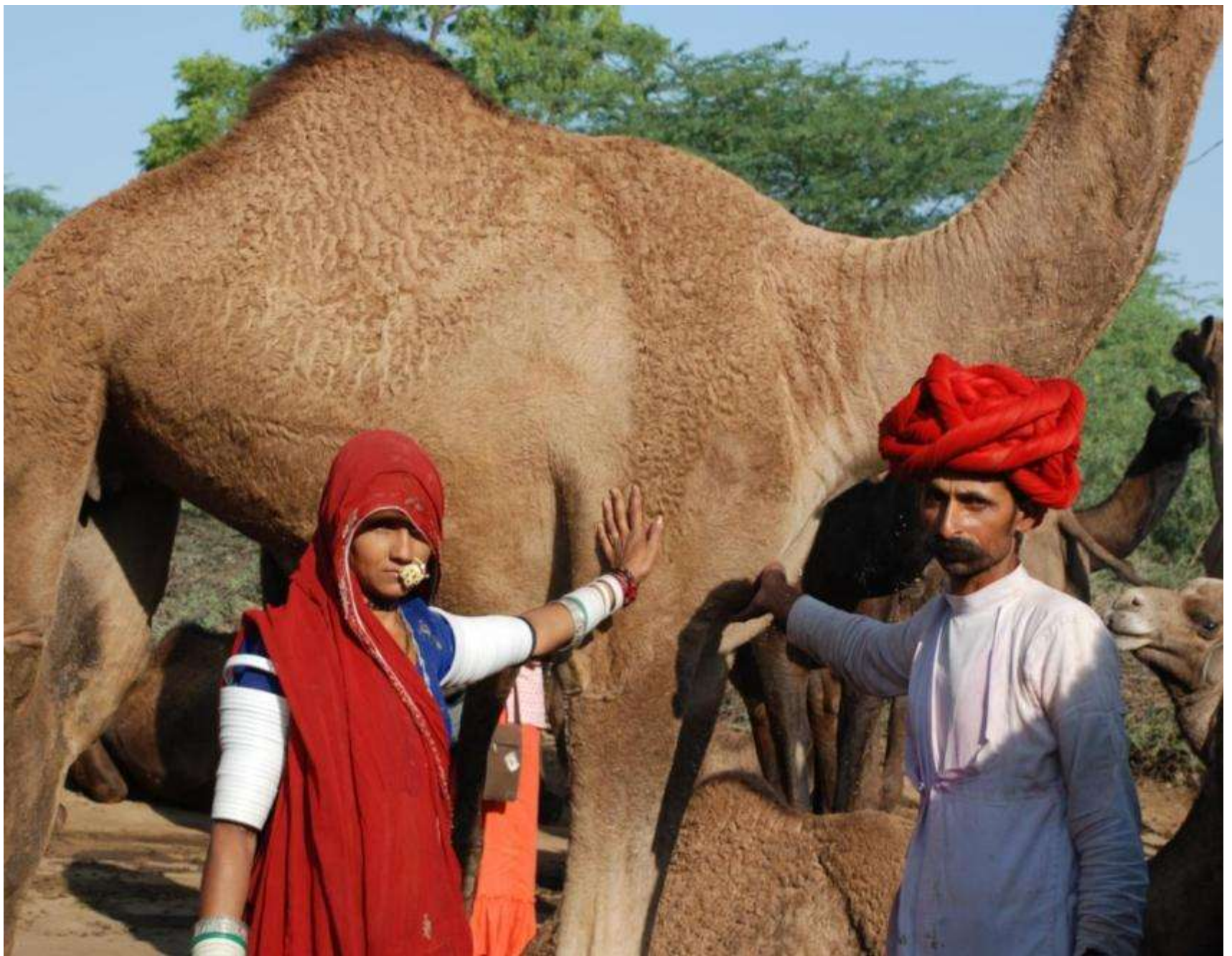


- Fueled by bio-energy
- Harvests almost anything
- Processes into protein
- Goes anywhere



- Needs fossil fuels
- Can harvest only one crop
- Does not process
- Can only be used on flat cultivated land











# Integration with agriculture



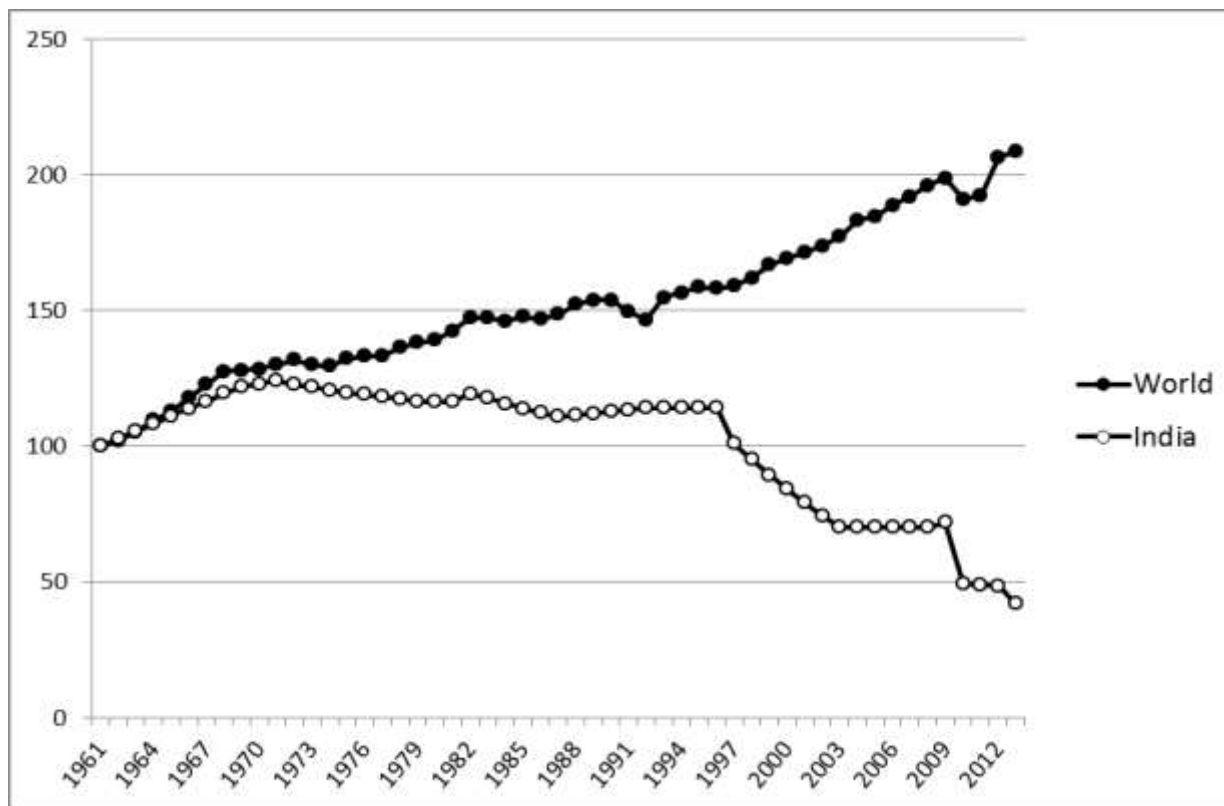


According to traditional knowledge, camels are grazing on 36 different plants





# Camel population development globally and in India



At the moment the camel is heading for extinction in Rajasthan, while thriving globally

?!





# Internationally camel milk is booming as a healthfood, especially for treatment of autism



www.camelsorajasthan.com. E-mail  
ilse@pastoralpeoples.org, #09660083437

# Principles of the Kumbhalgarh Camel Dairy



- NO Stall-feeding – continue nomadic herding to ensure bio-diverse diet and camel health
- Milking by hand
- Mother and young are not separated
- Camels are treated as individuals and family members



# Training and Capacity Building

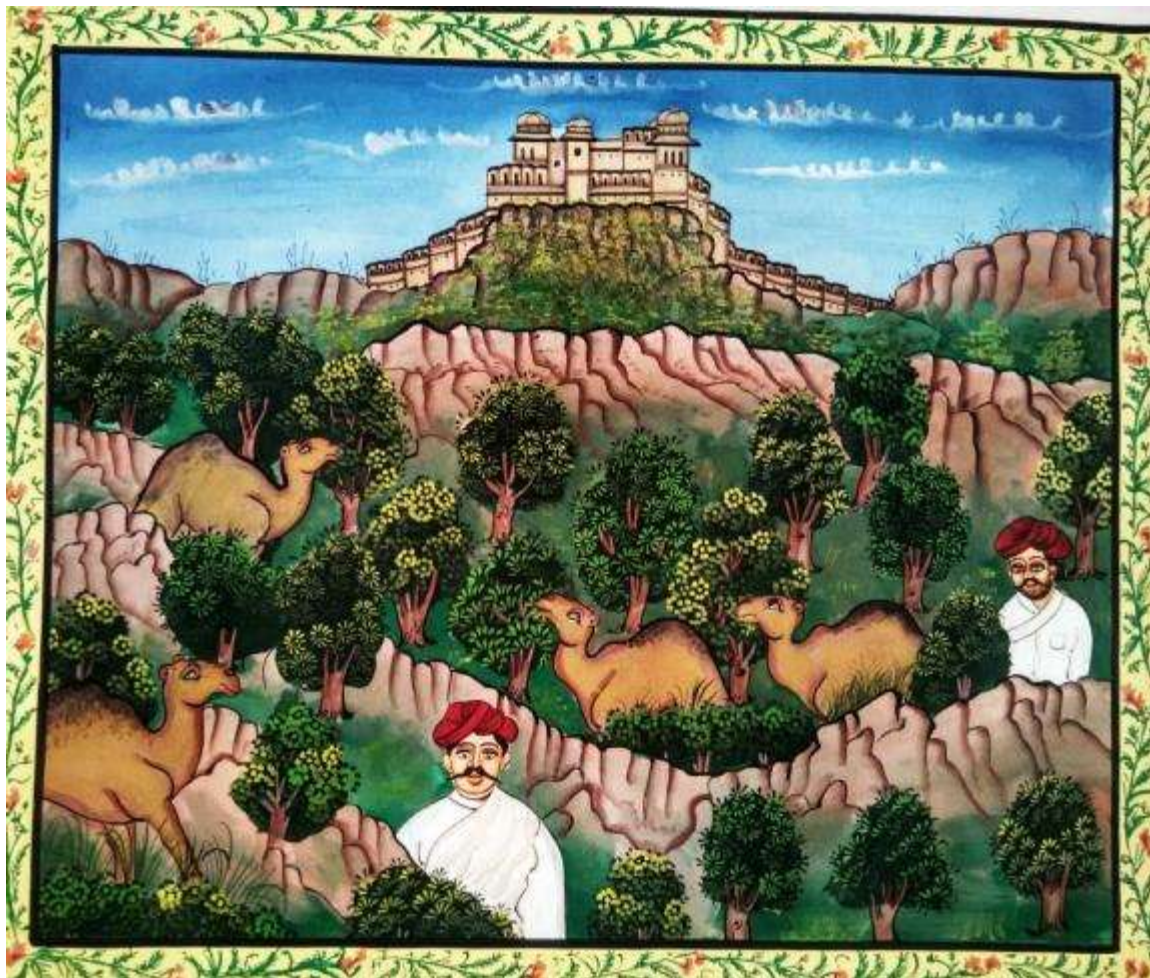








T  
H  
A  
N  
K  
  
Y  
O  
U



[www.camelsofrajasthan.com](http://www.camelsofrajasthan.com)

[www.ilse-koehler-rollefson.com](http://www.ilse-koehler-rollefson.com)

[www.pastoralpeoples.org](http://www.pastoralpeoples.org)

[ilse@pastoralpeoples.org](mailto:ilse@pastoralpeoples.org)





7<sup>TH</sup> INTERNATIONAL CONVENTION  
OF ENVIRONMENTAL LAUREATES  
FREIBURG, GERMANY - 15 - 18 MARCH 2018

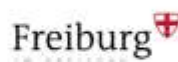


EUROPEAN  
ENVIRONMENT  
FOUNDATION

# Laureates' Symposium



Supporters and Donators



Associate Partners

